

Speeding-Related Fatalities

Washington State, 1998-2007



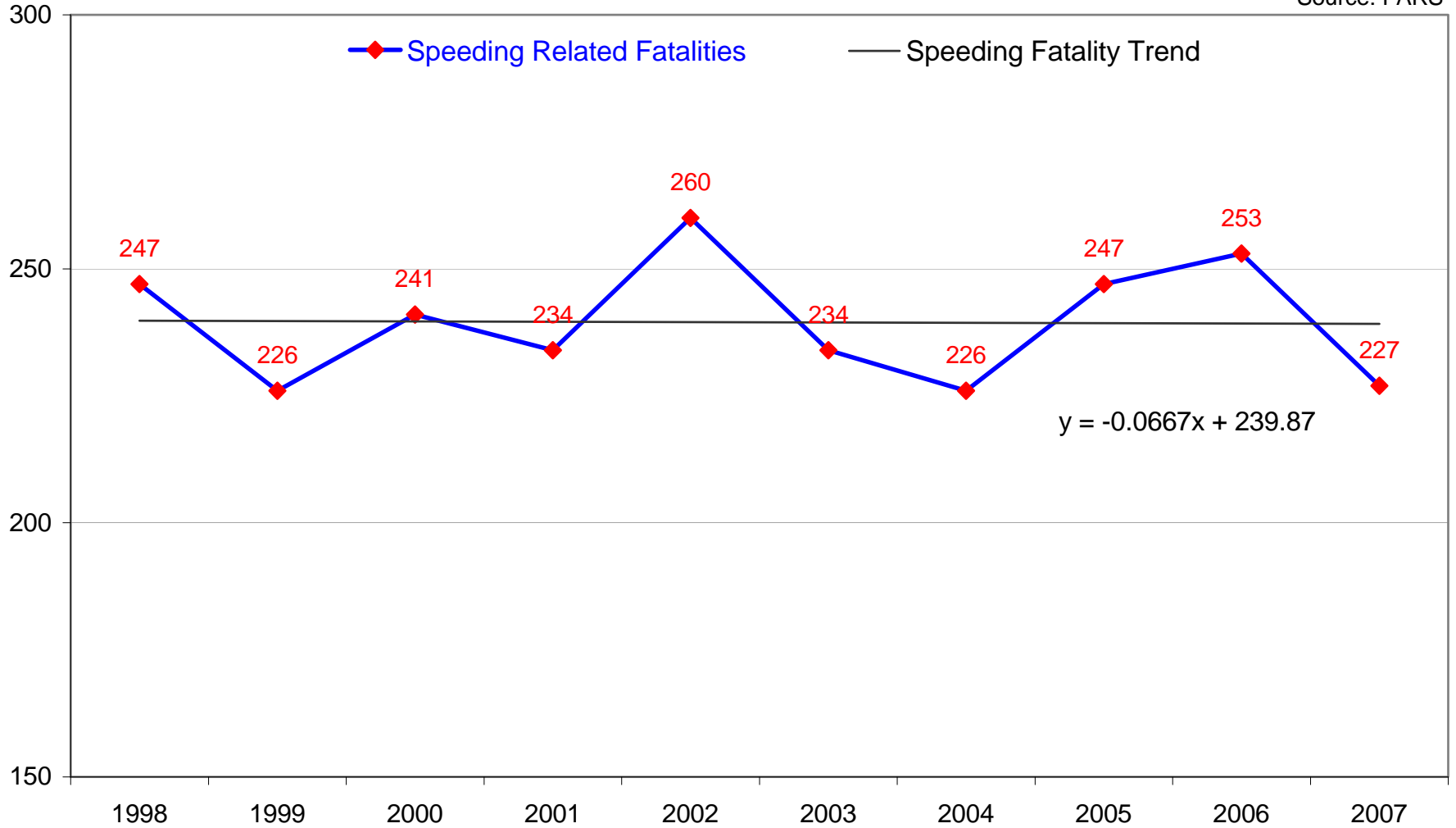
WASHINGTON
Traffic Safety
COMMISSION

March 13, 2009

SPEEDING RELATED FATALITIES, WA 1998-2007

Number of speeding related fatalities by year

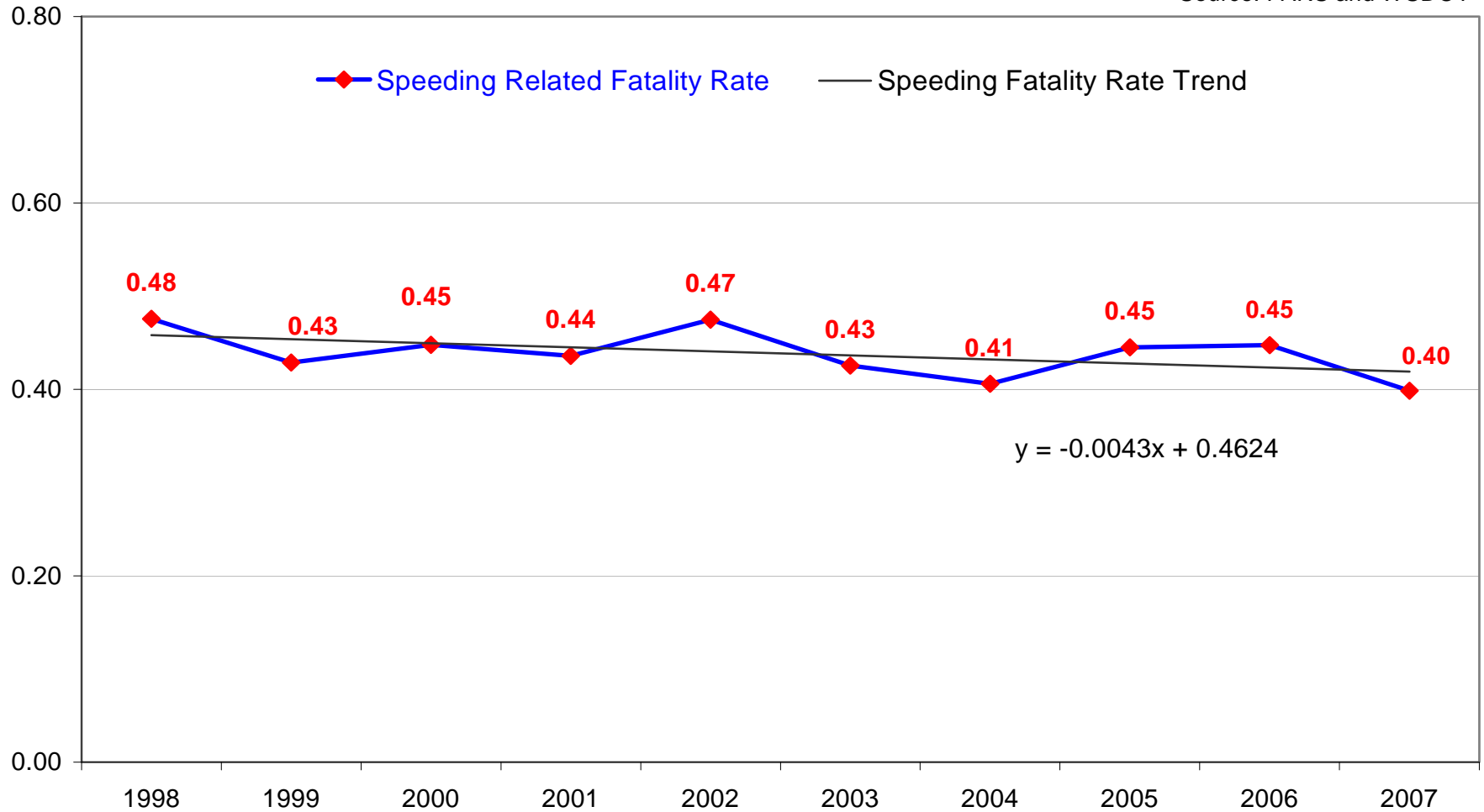
Source: FARS



SPEEDING RELATED FATALITY RATE, WA 1998-2007

Speeding related fatalities per 100 Million VMT

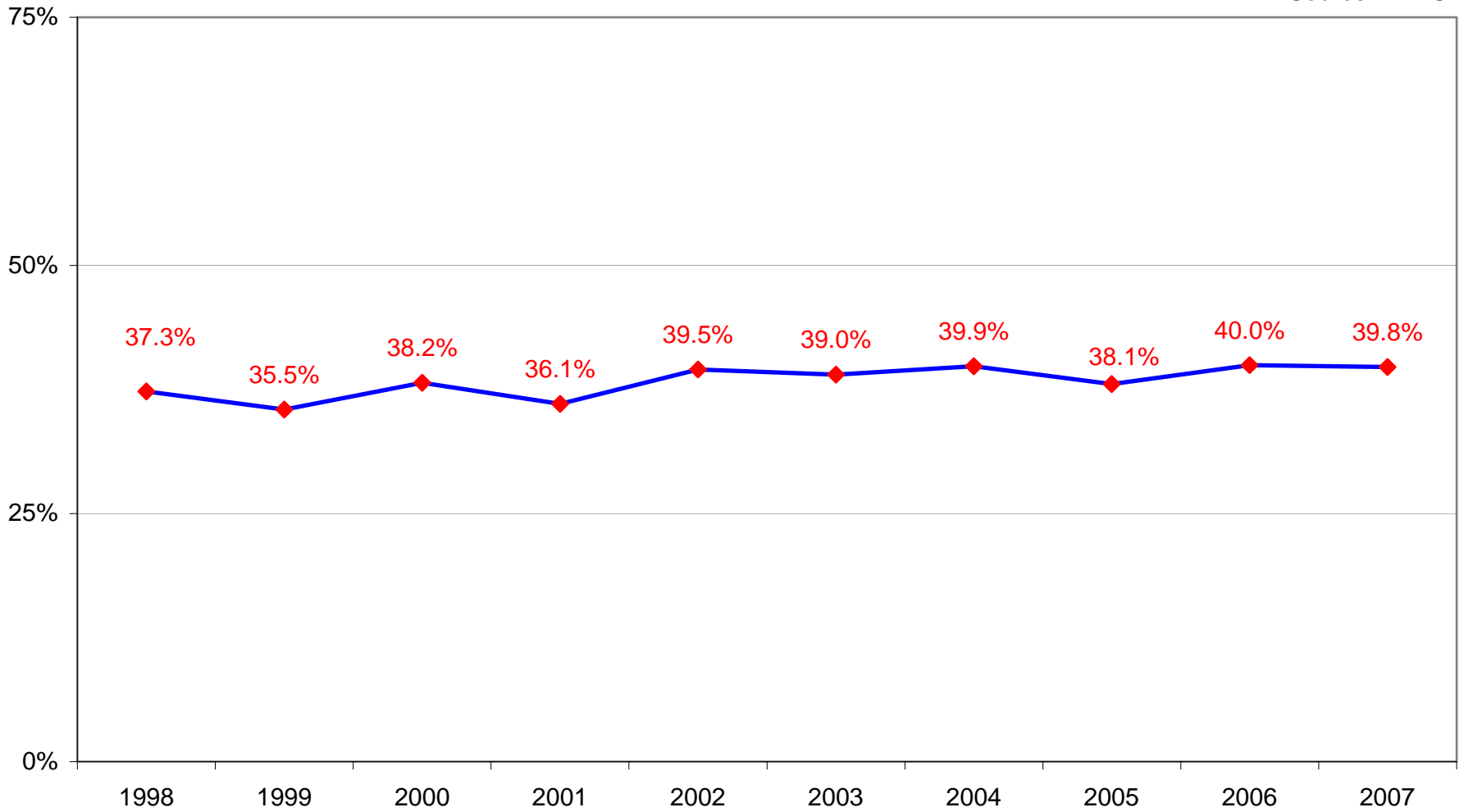
Source: FARS and WSDOT



WASHINGTON SPEEDING FATALITIES, 1998-2007

Percentage of All Traffic Fatalities by Year

Source: FARS

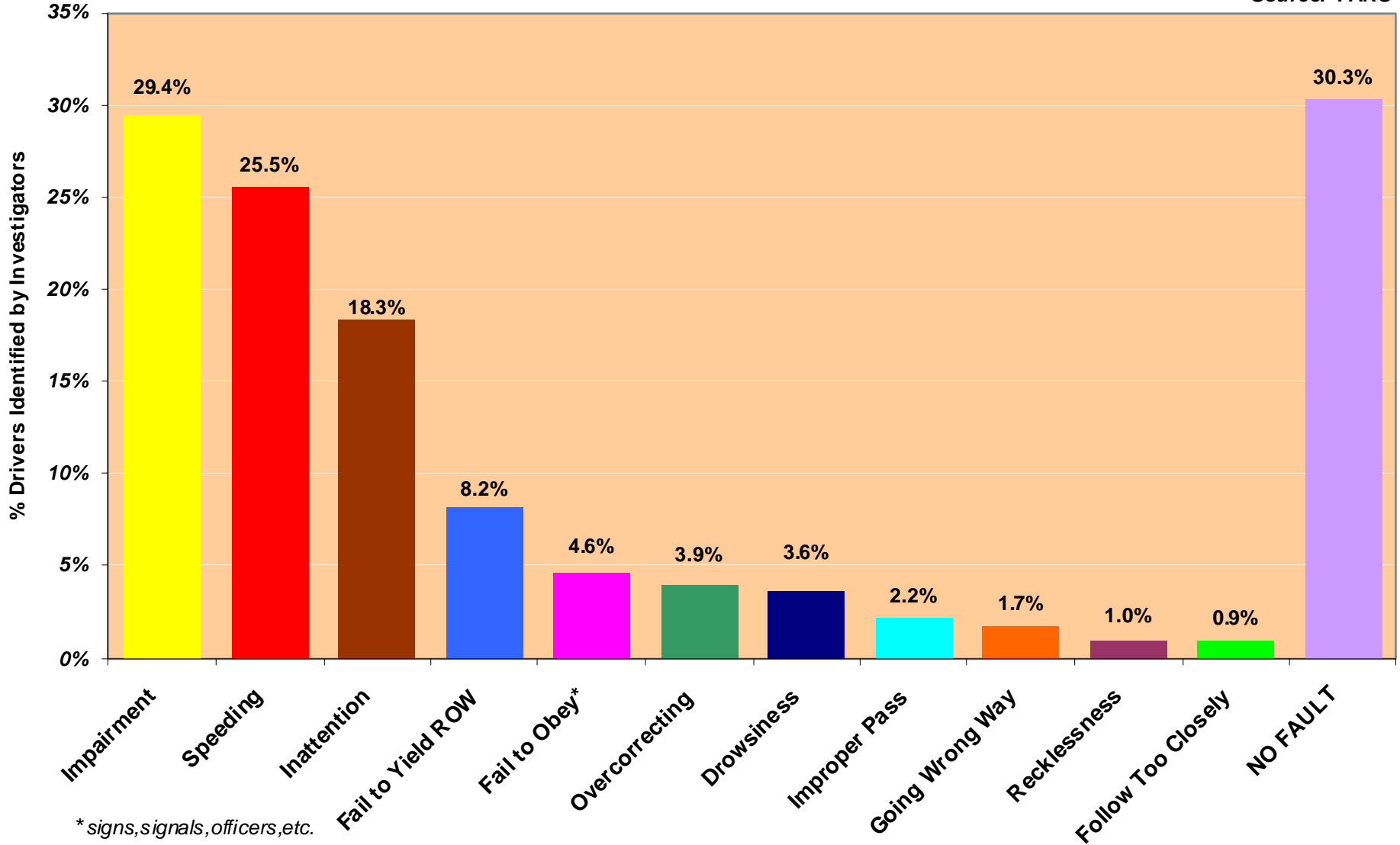


Driver Errors in Washington Fatal Crashes, 1998-2007

By Percent of All Drivers in Fatal Crashes (N=8,263)

As identified by collision investigators

Source: FARS

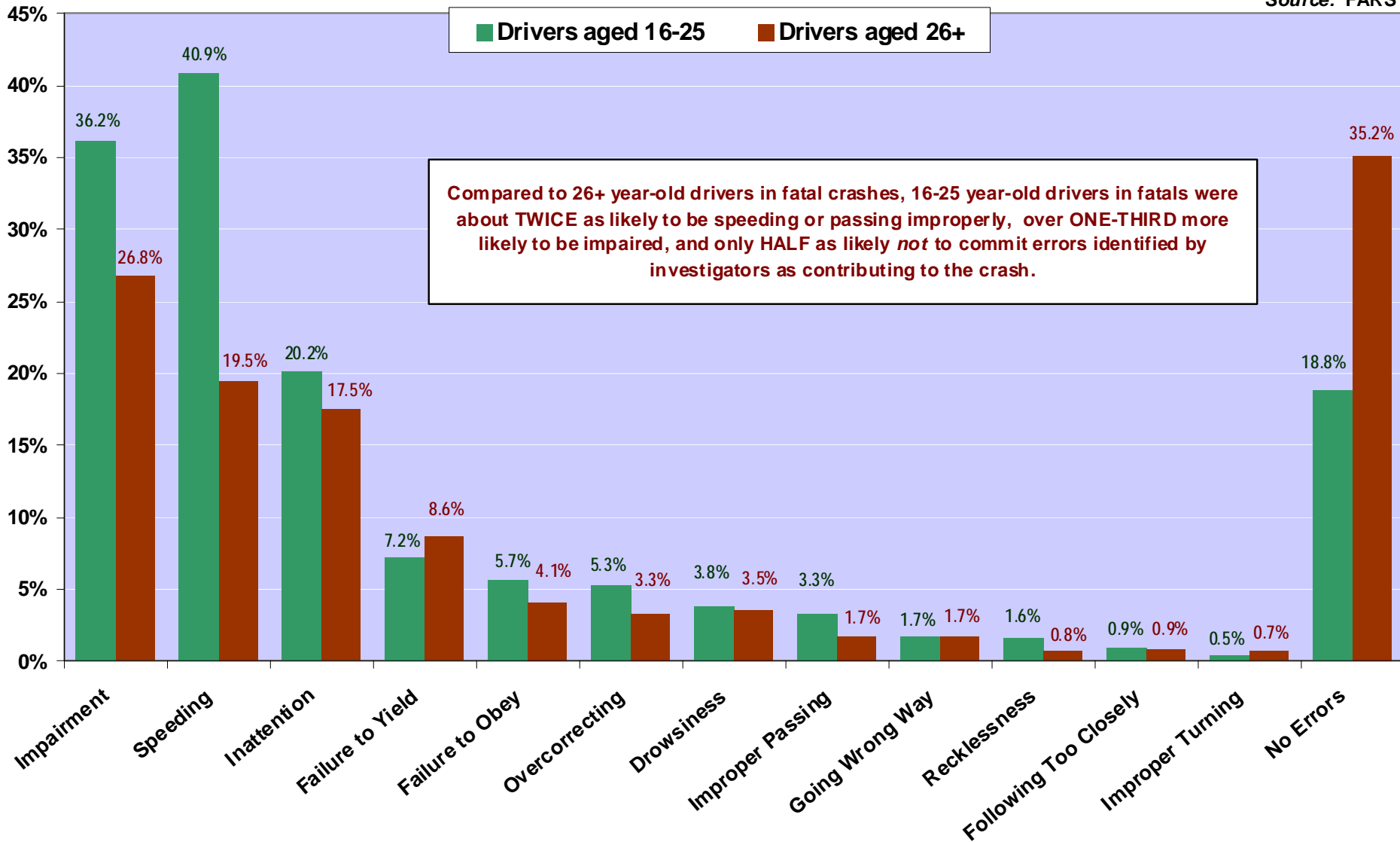


DRIVER ERRORS IN WASHINGTON FATAL CRASHES, 1998-2007

By Age Group, 16-25 year-olds vs 26+ year-olds

By percentage of age-group drivers in fatal crashes

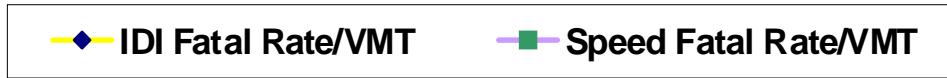
Source: FARS



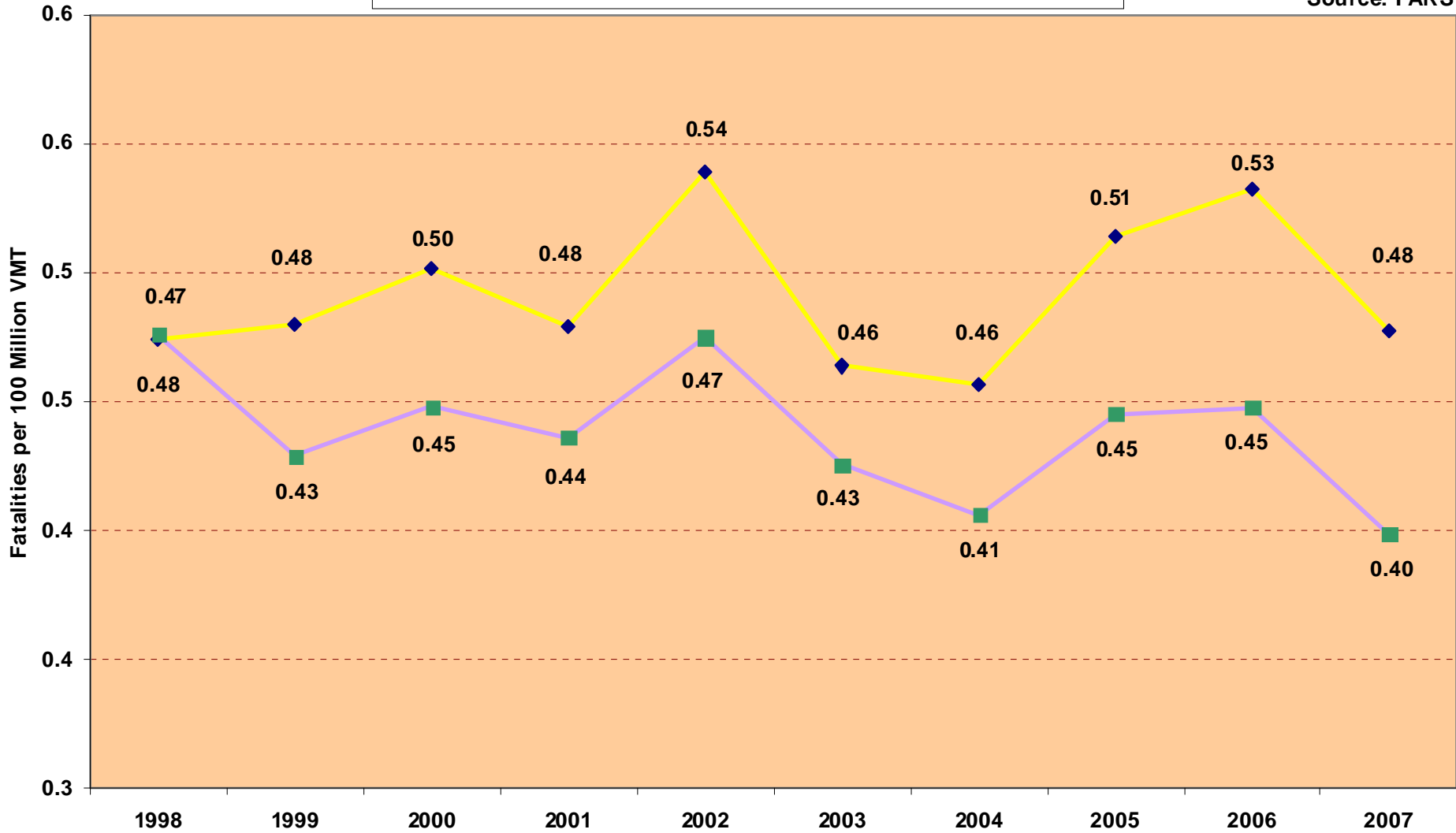
1998-2007 Washington Traffic Fatality Rate

Impaired-Driver-Involved v. Speed-Involved

per 100 million vehicle-miles-traveled



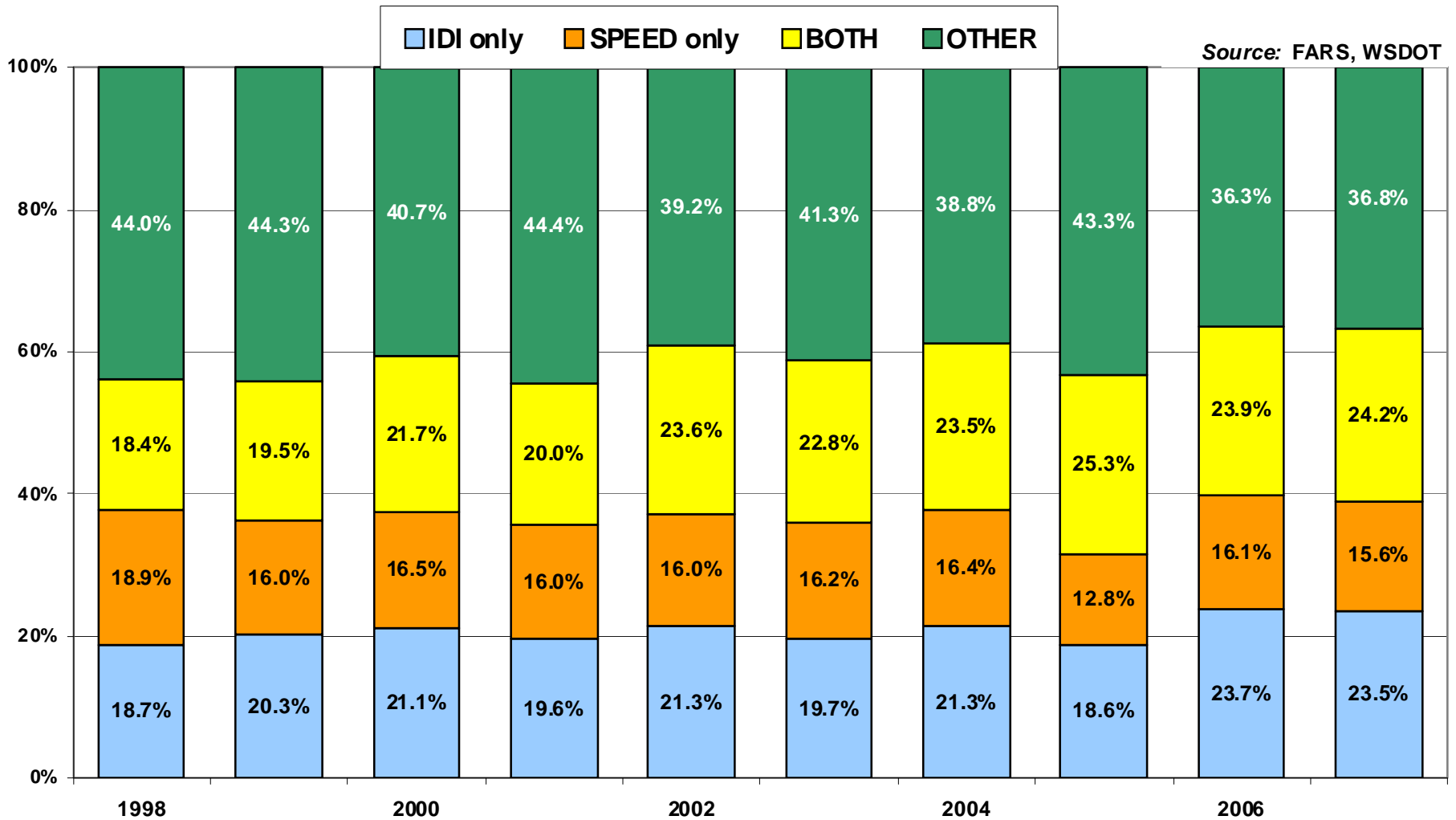
Source: FARS



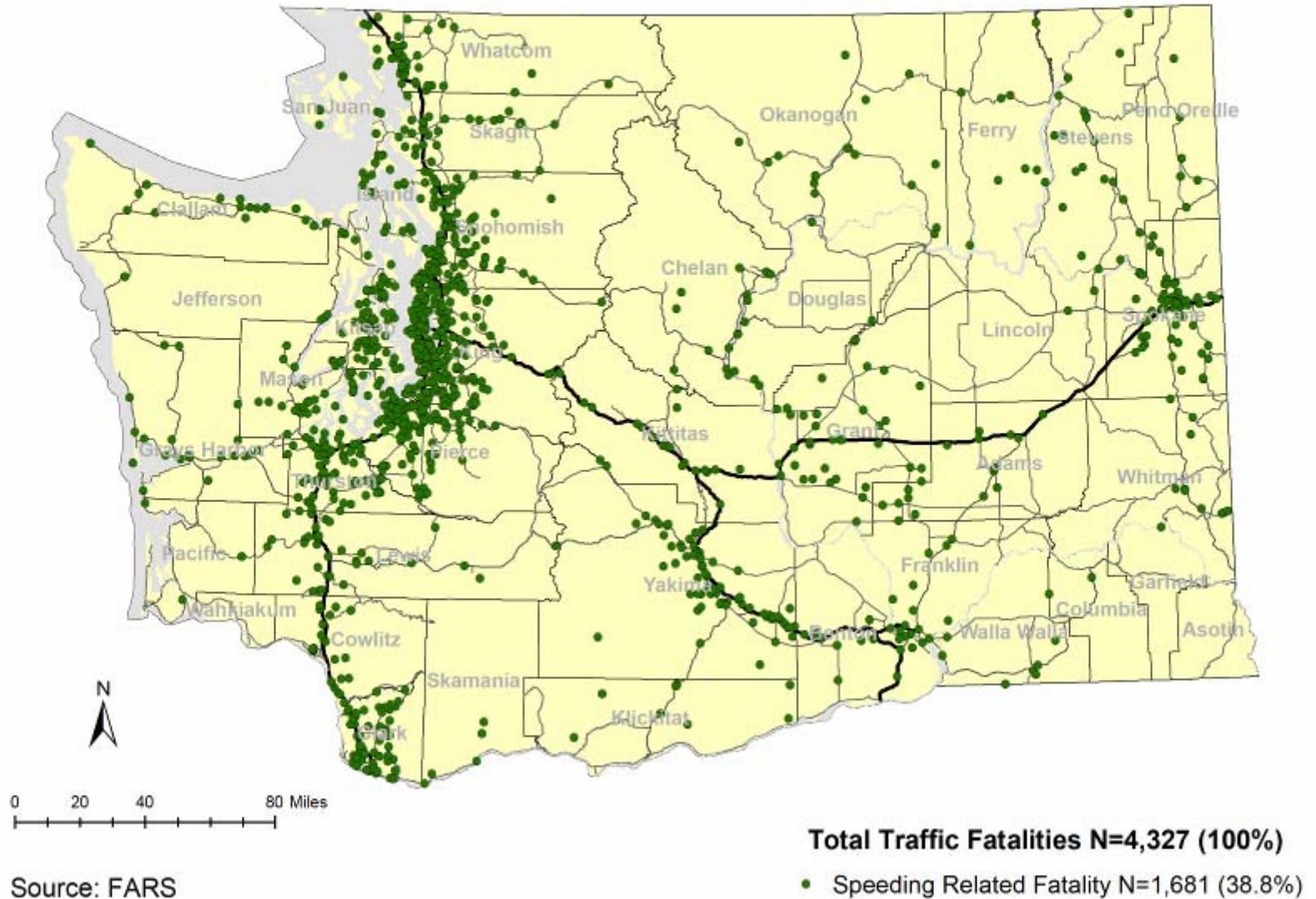
WASHINGTON TRAFFIC FATALITIES, 1998-2007

Impaired driving-involved, Speeding-involved, BOTH, or Other

By year and percent of total fatalities,

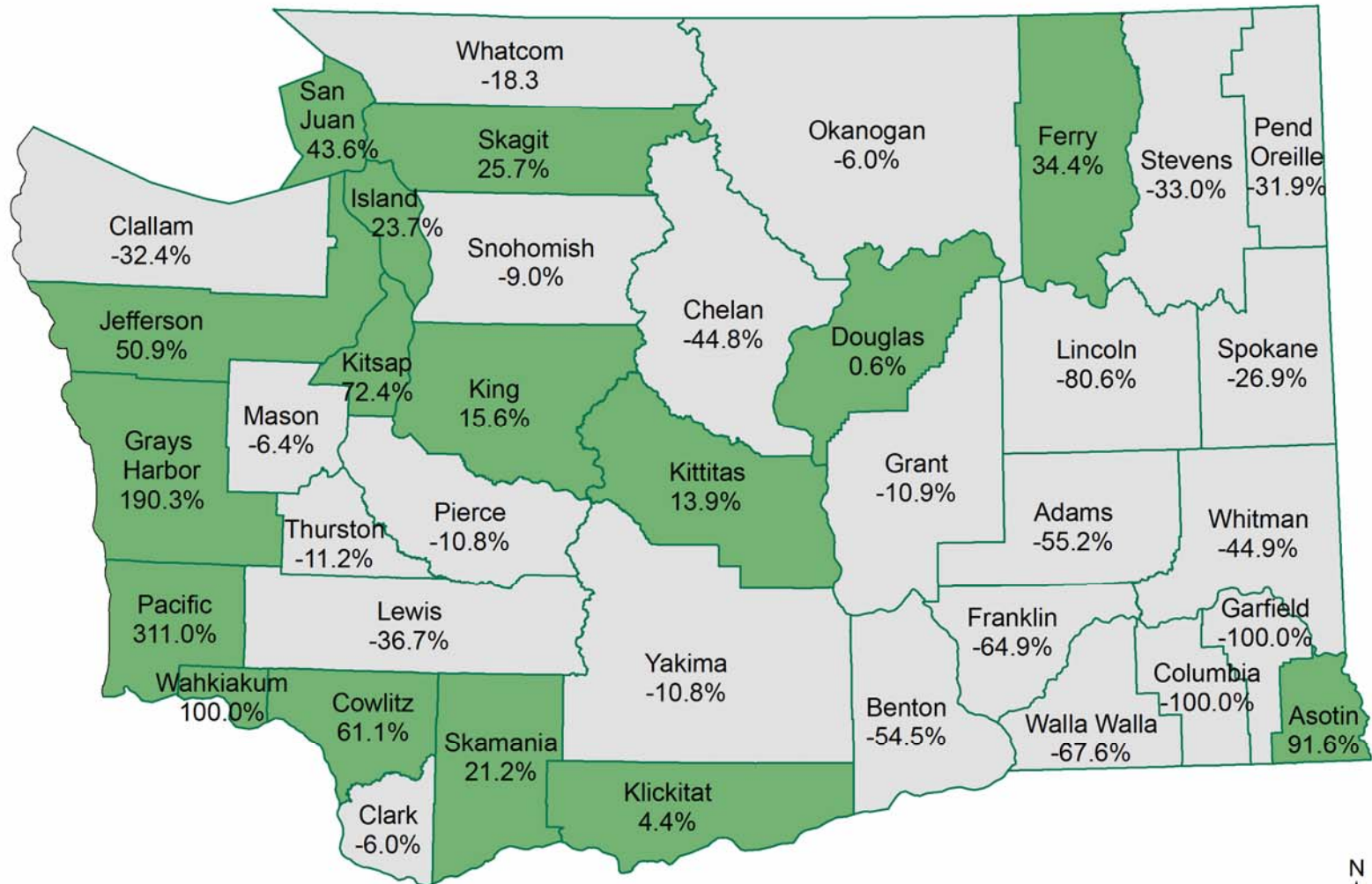


Speeding Related Fatalities, 2001-2007



Washington Speeding Related Fatality Rates, 1998-2002 v. 2003-2007

Percent Change in Fatality Rate per 100M VMT by County



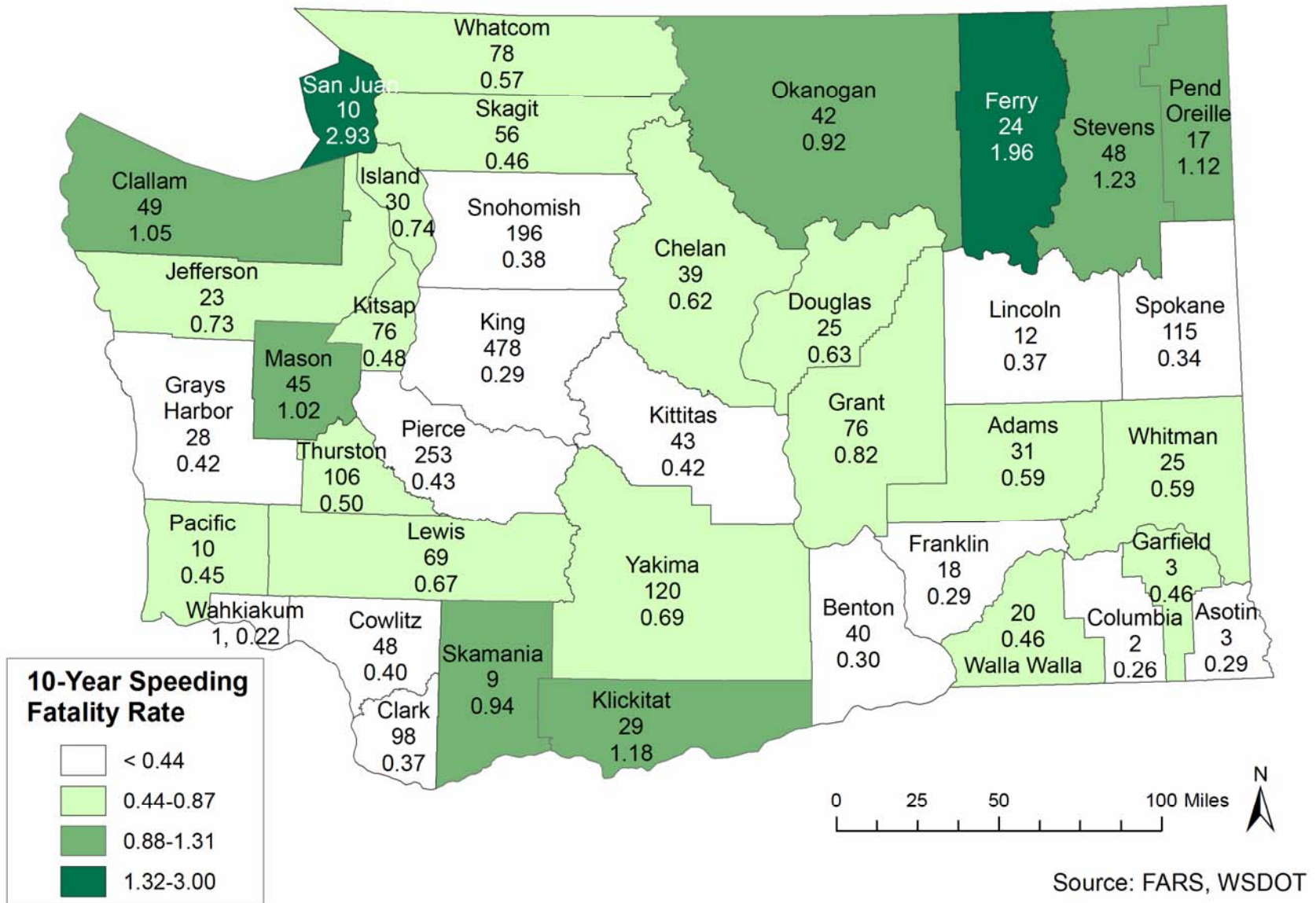
Decrease in 5-Year Speeding Fatality Rate
 Increase in 5-Year Speeding Fatality Rate



Source: FARS, WSDOT

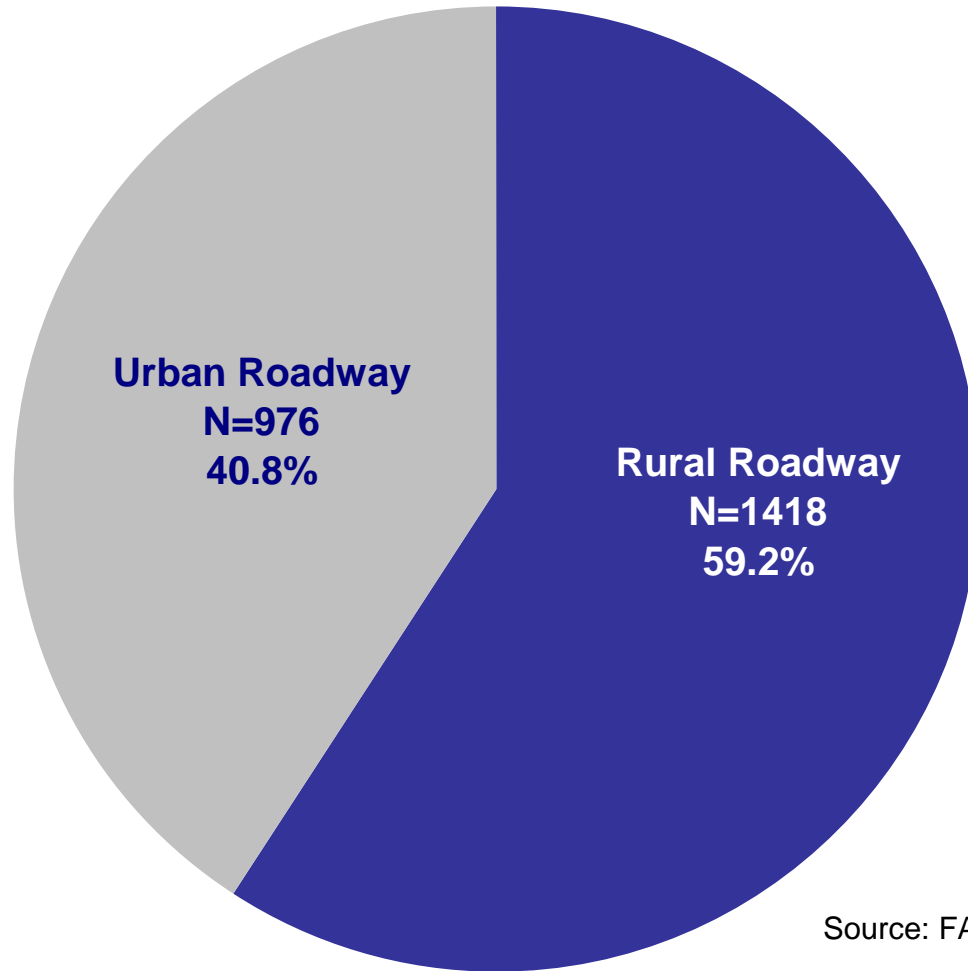
Speeding Involved Fatalities by County, WA 1998-2007

Fatalities and Fatality Rate per 100M VMT



Statewide, the 10-Year Speeding Fatality Rate was 0.44.

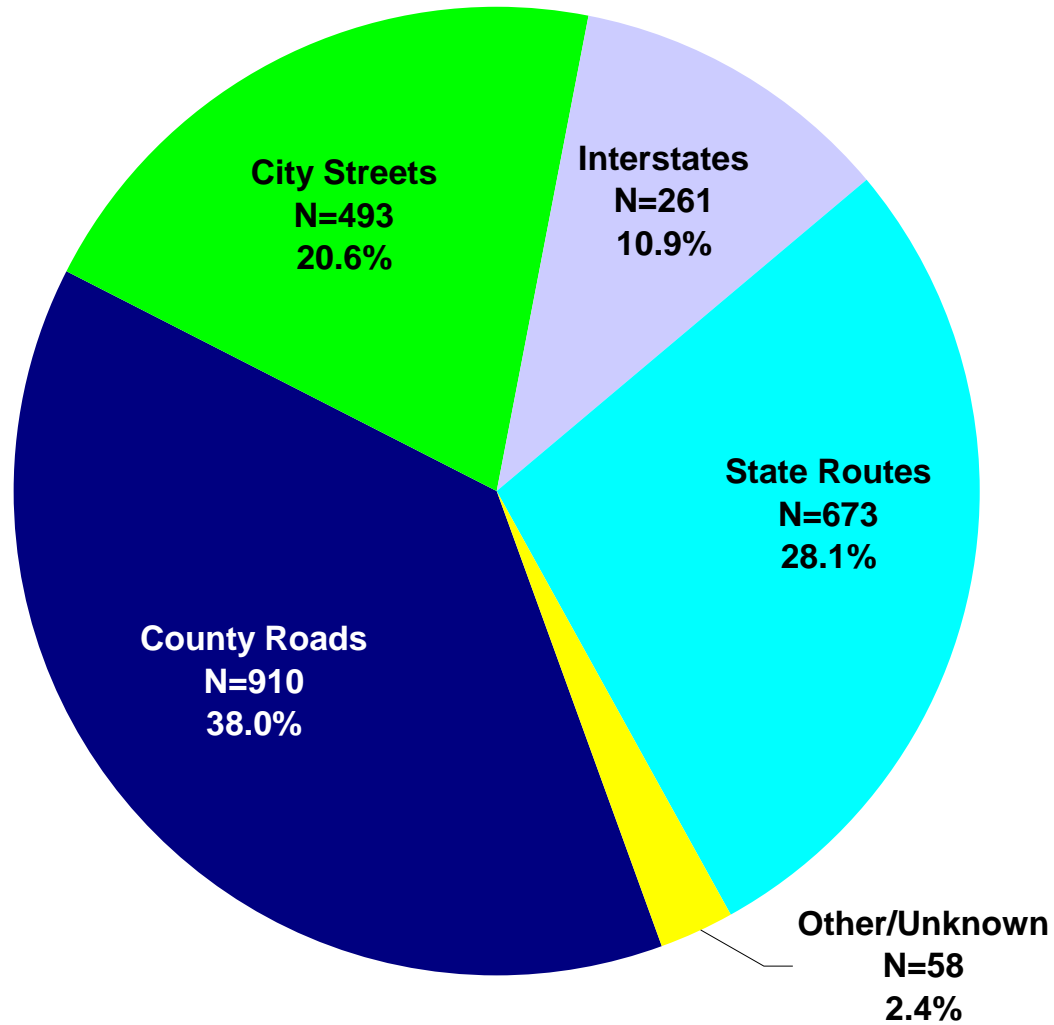
SPEEDING RELATED FATALITIES, WA 1998-2007 By Urban-Rural Roadway Function Classification



Source: FARS

SPEEDING RELATED FATALITIES, WA 1998-2007

By Road Type

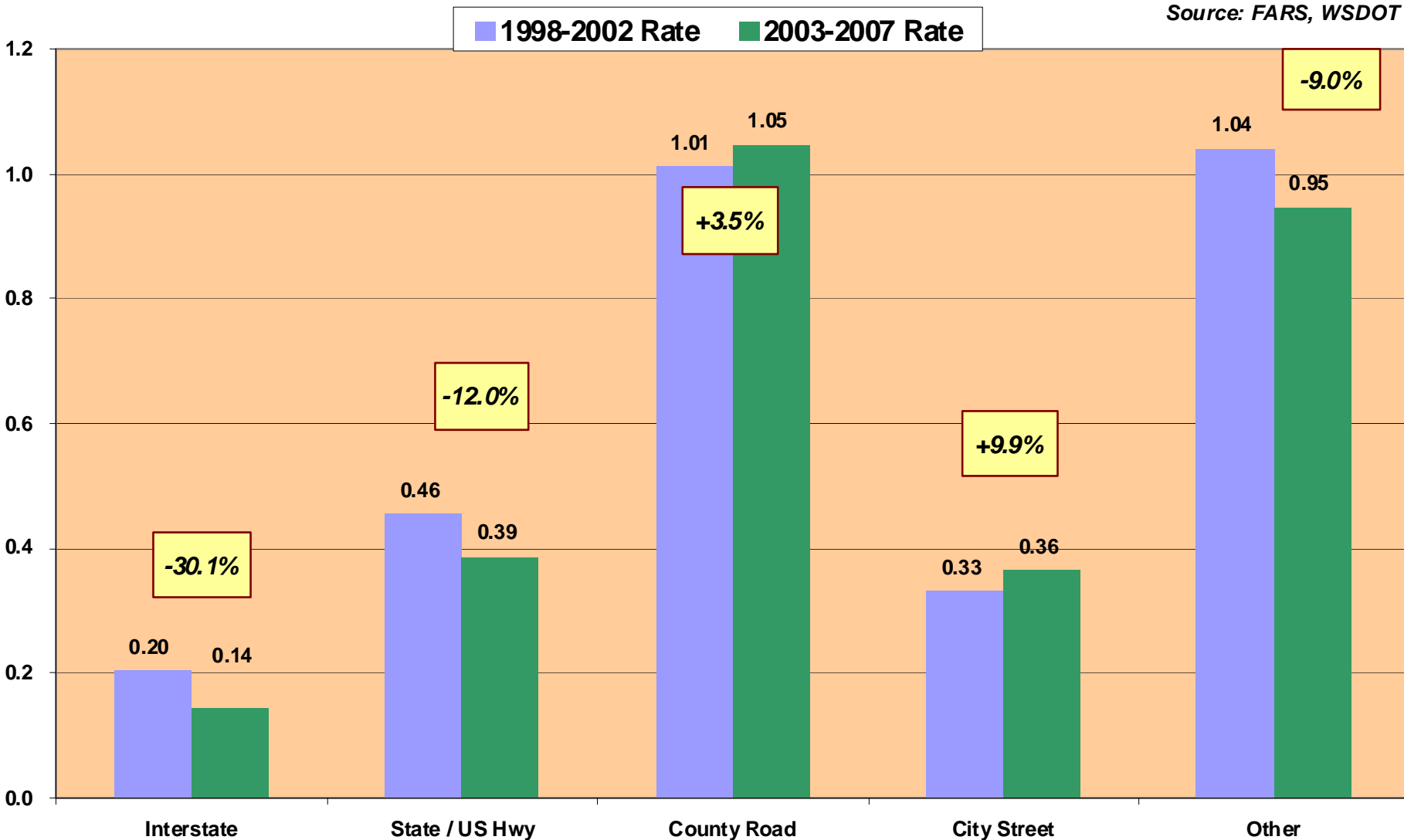


WASHINGTON SPEEDING DRIVER-INVOLVED FATALITY RATE, 1998-2007

By Road Type, 1998-2002 SDI Rate vs 2003-2007 SDI Rate

SDI Fatalities per 100 million vehicle-miles traveled

Source: FARS, WSDOT

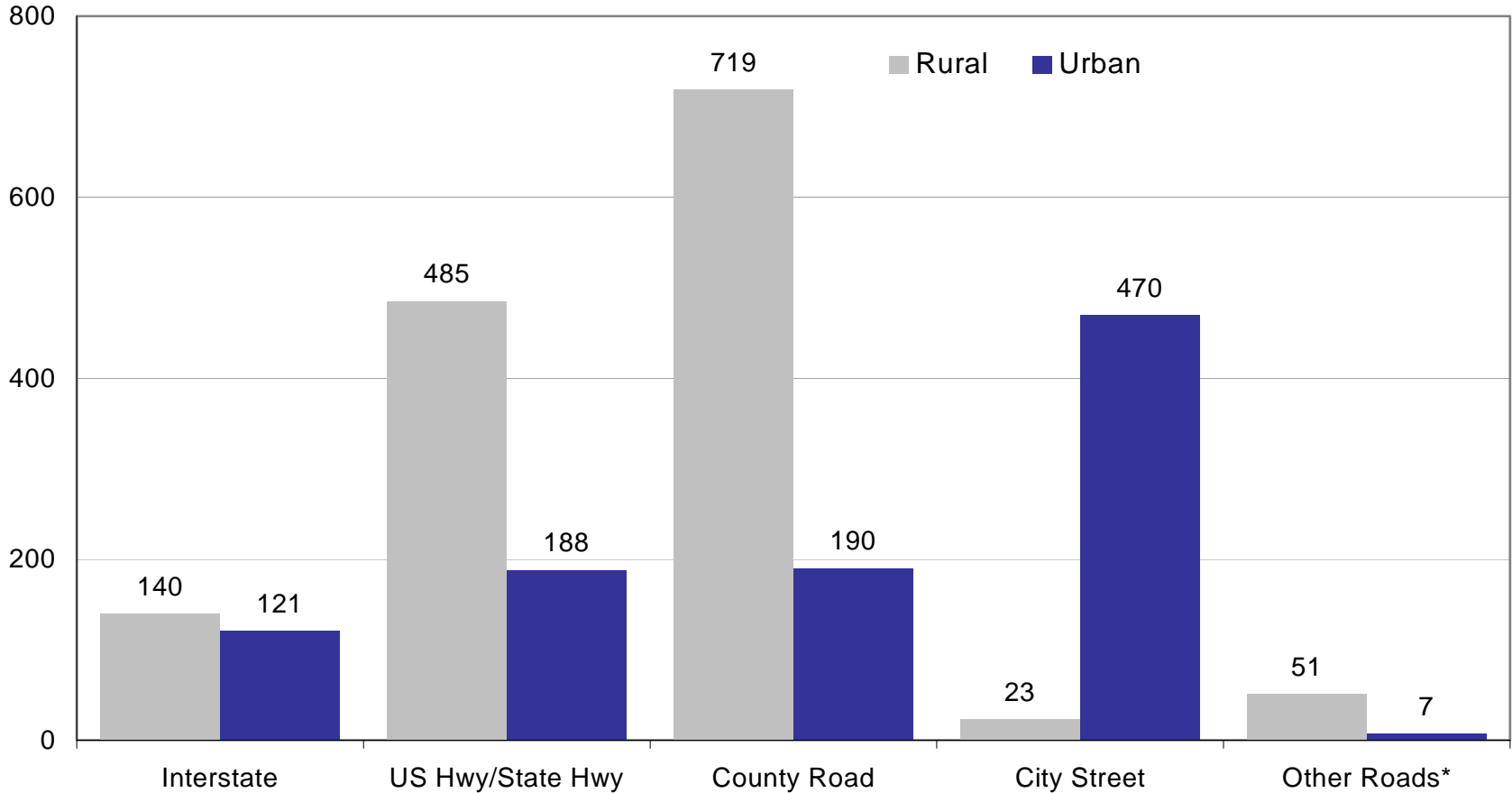


SPEEDING RELATED FATALITIES, WA 1998-2007

By Road Type and Urban v. Rural

Number of speeding related fatalities

Source: FARS



*Other roads include limited access roads open to the public, such as US Forest Service Roads, college campuses, and airports.

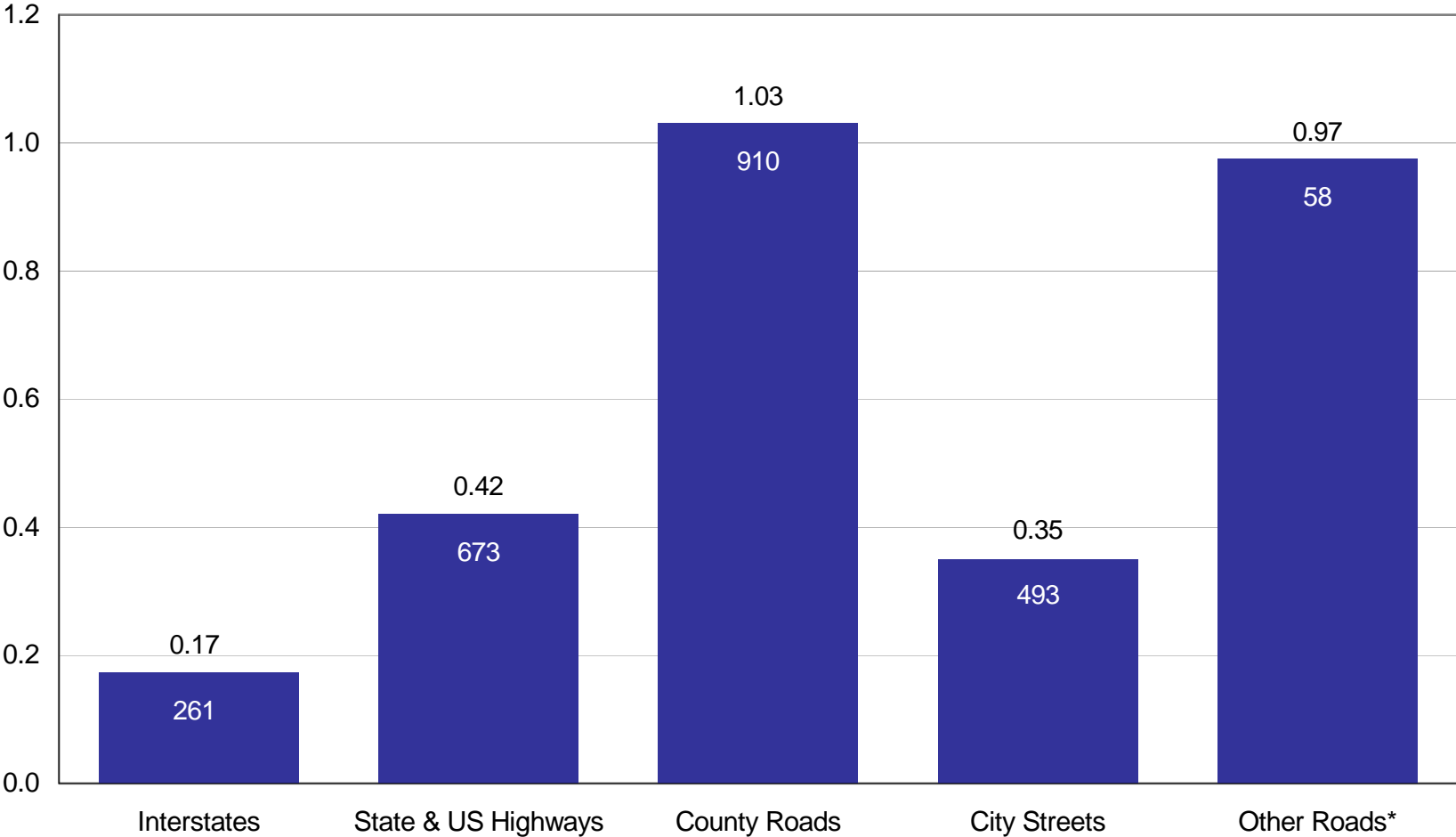
SPEEDING RELATED FATALITY RATE, WA 1998-2007

By Road Type

Speeding fatalities per 100 million vehicle miles traveled

Number of speeding fatalities in columns

Source: FARS and WSDOT



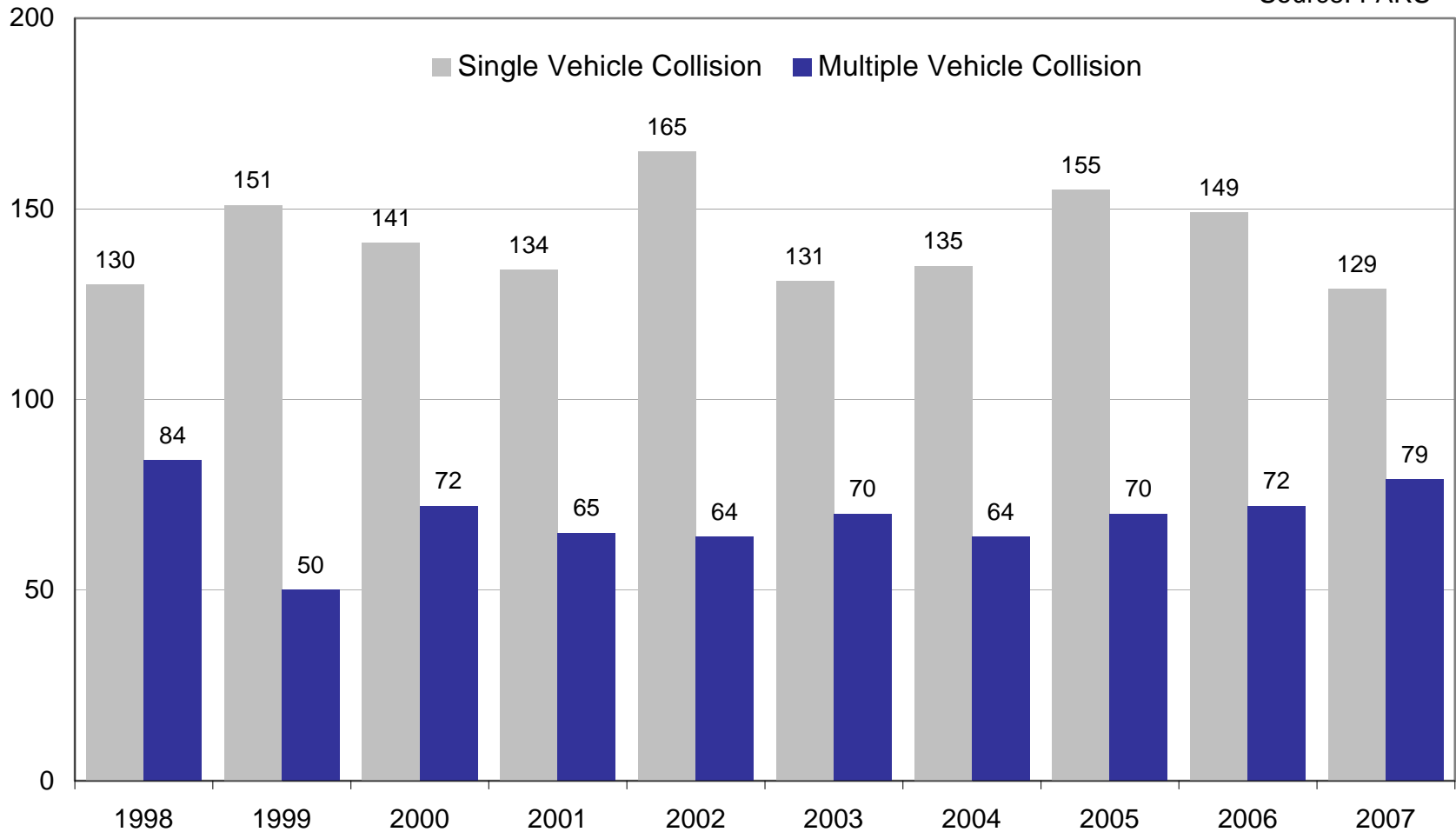
*Other roads include limited access roads open to the public, such as US Forest Service Roads, college campuses, and airports.

SPEEDING RELATED FATALITIES, WA 1998-2007

By Single-Vehicle v. Multiple-Vehicle Collisions

Number of speeding related fatalities by Year

Source: FARS

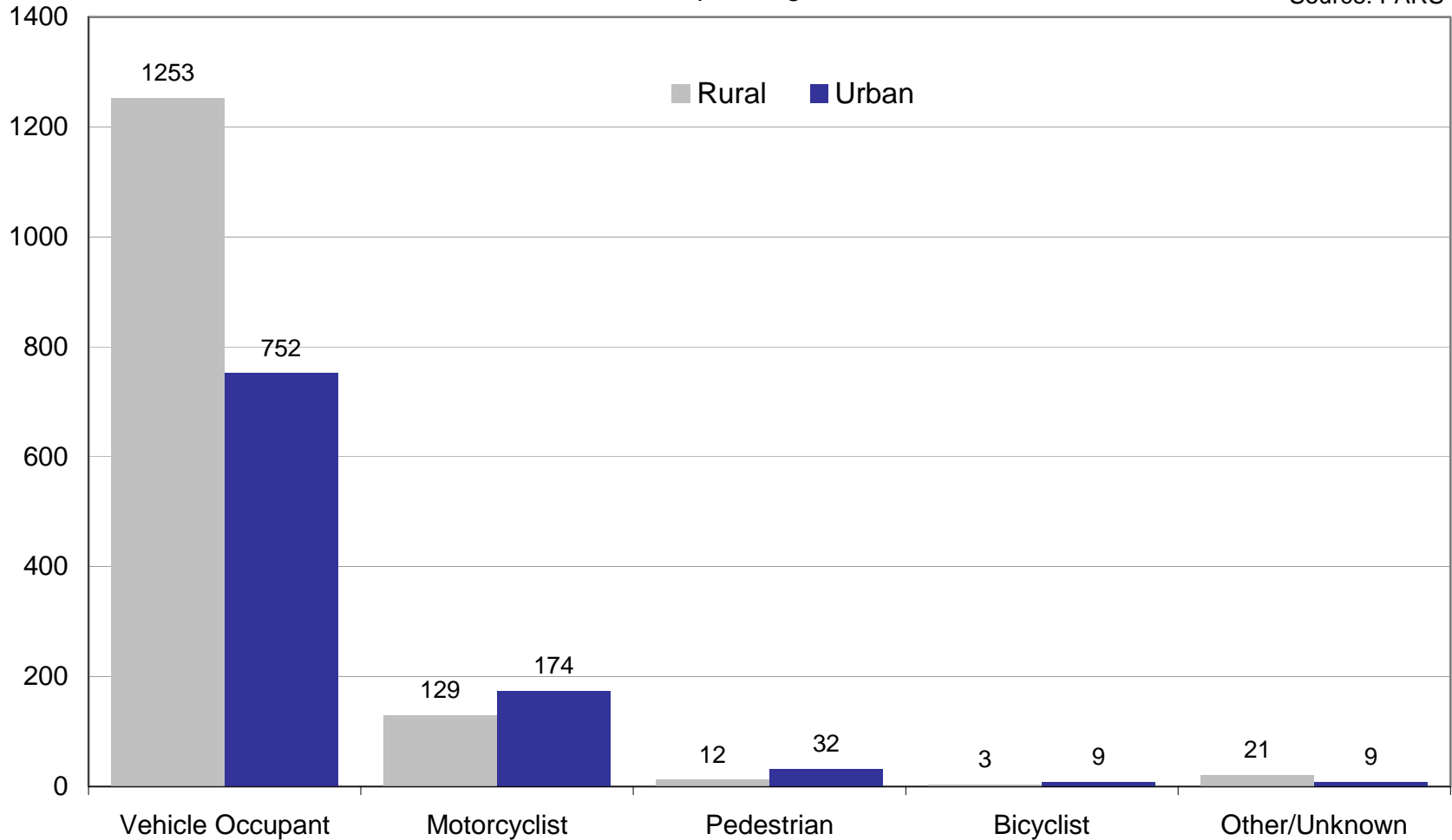


SPEEDING RELATED FATALITIES, WA 1998-2007

By Person Type and Urban v. Rural

Number of speeding related fatalities

Source: FARS

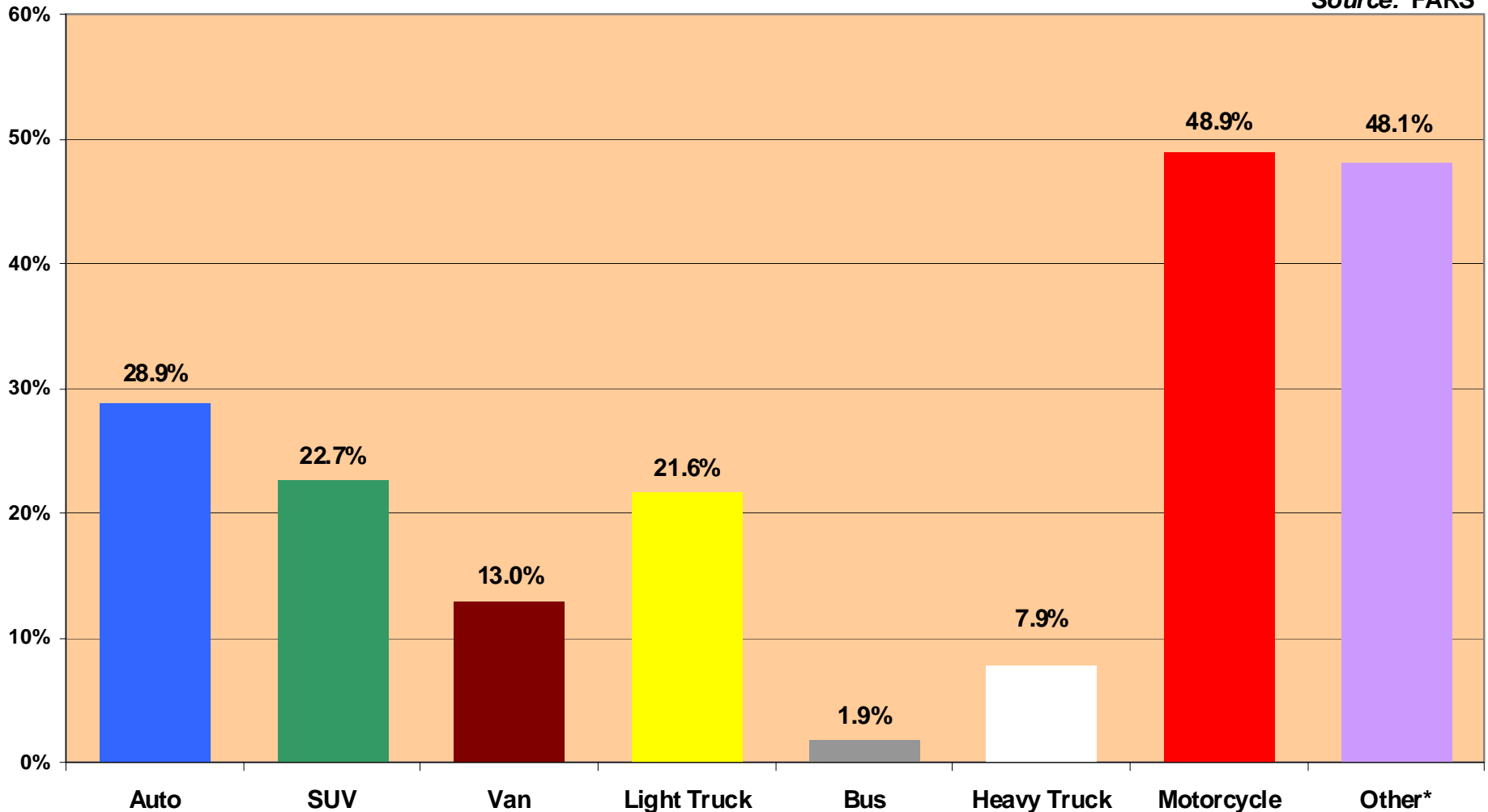


DRIVERS SPEEDING IN WASHINGTON FATAL CRASHES, 1998-2007

*By Vehicle Type, Percent of Speeding Drivers for each vehicle type**

**As identified by collision investigators*

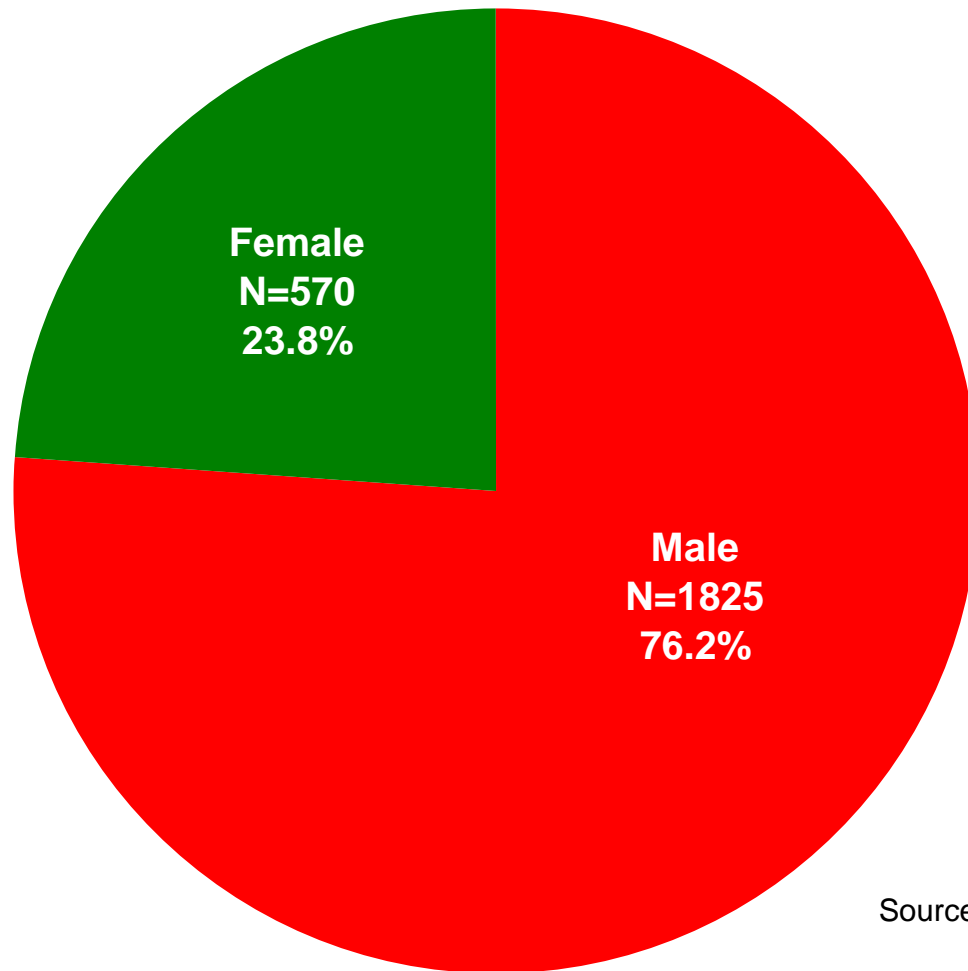
Source: FARS



*Includes ATVs, snowmobiles, farm equipment, golf carts, fork lifts, etc.

SPEEDING RELATED FATALITIES, WA 1998-2007

By Gender



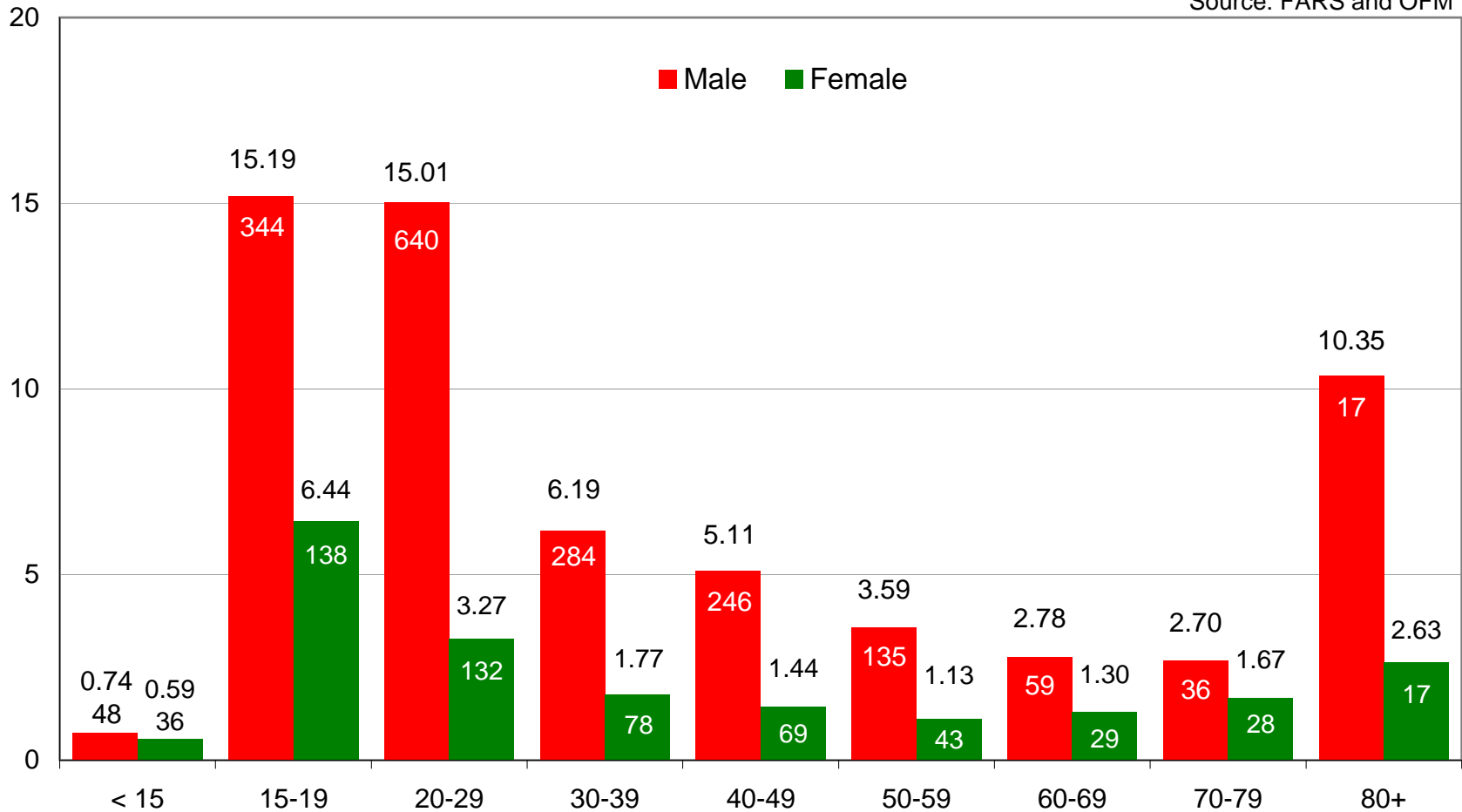
Source: FARS

SPEEDING FATALITY RATES, WA 1998-2007

By Age Group and Gender

Number of speeding fatalities per 100,000 population
Number of fatalities in columns

Source: FARS and OFM

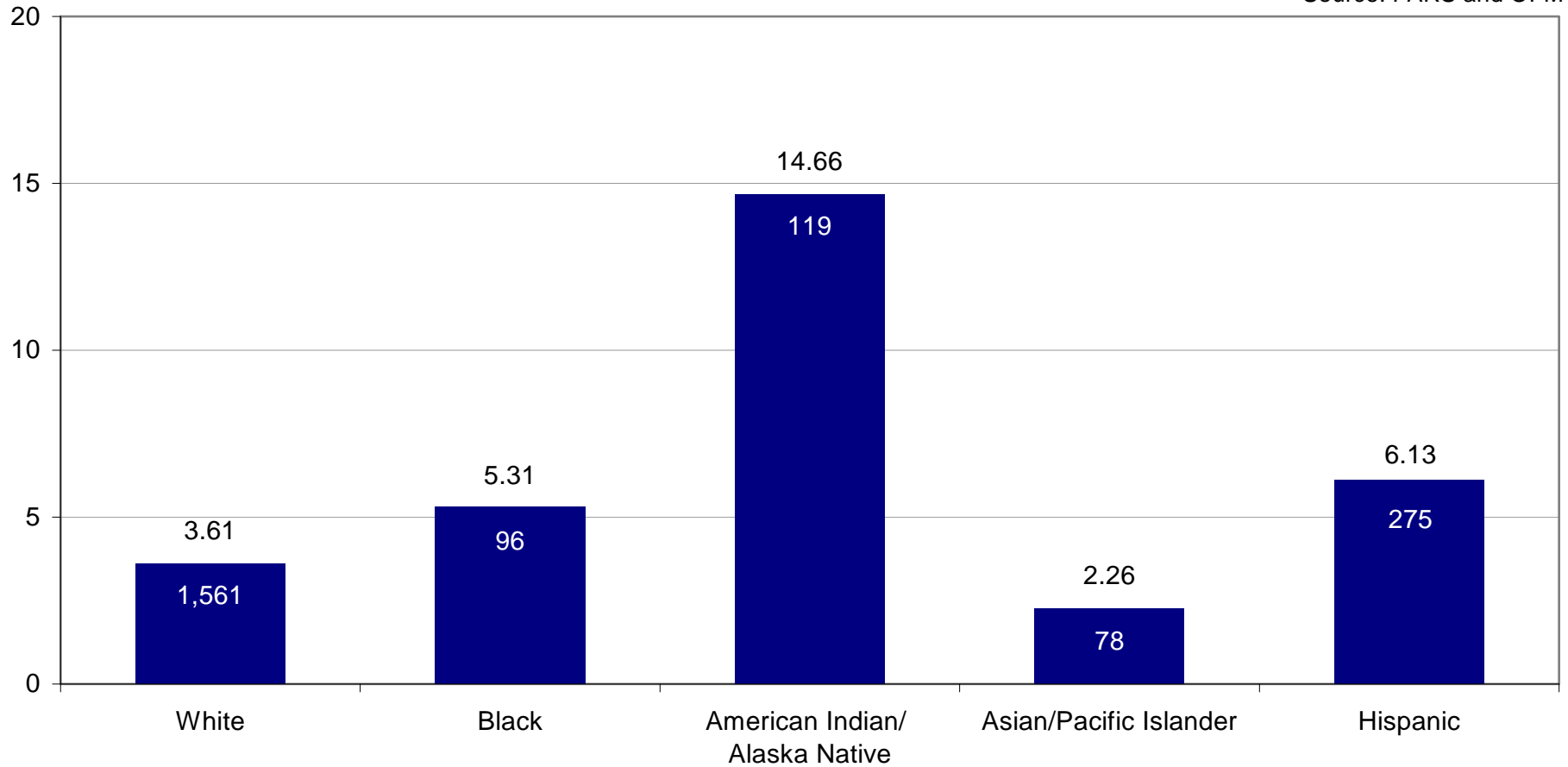


WASHINGTON SPEEDING FATALITY RATES, 1999-2007

By Race and Ethnicity

Speeding fatalities per 100,000 population

Source: FARS and OFM



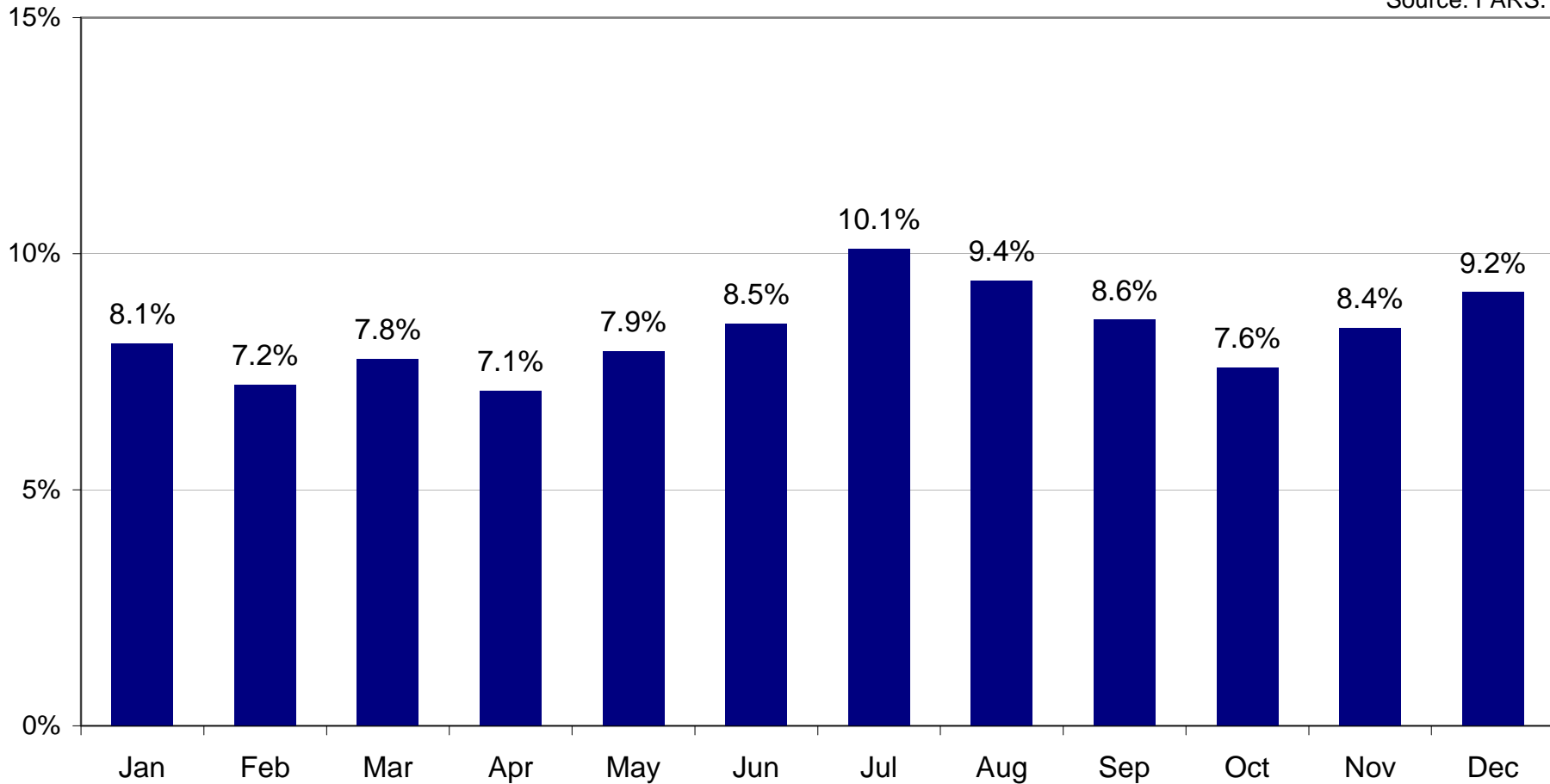
Note: Race/ethnicity data from the death certificates. Race/ethnicity groups are mutually exclusive.

SPEEDING RELATED FATALITIES, WA 1998-2007

By Month of Crash

Percentage of speeding related fatalities by Month

Source: FARS.

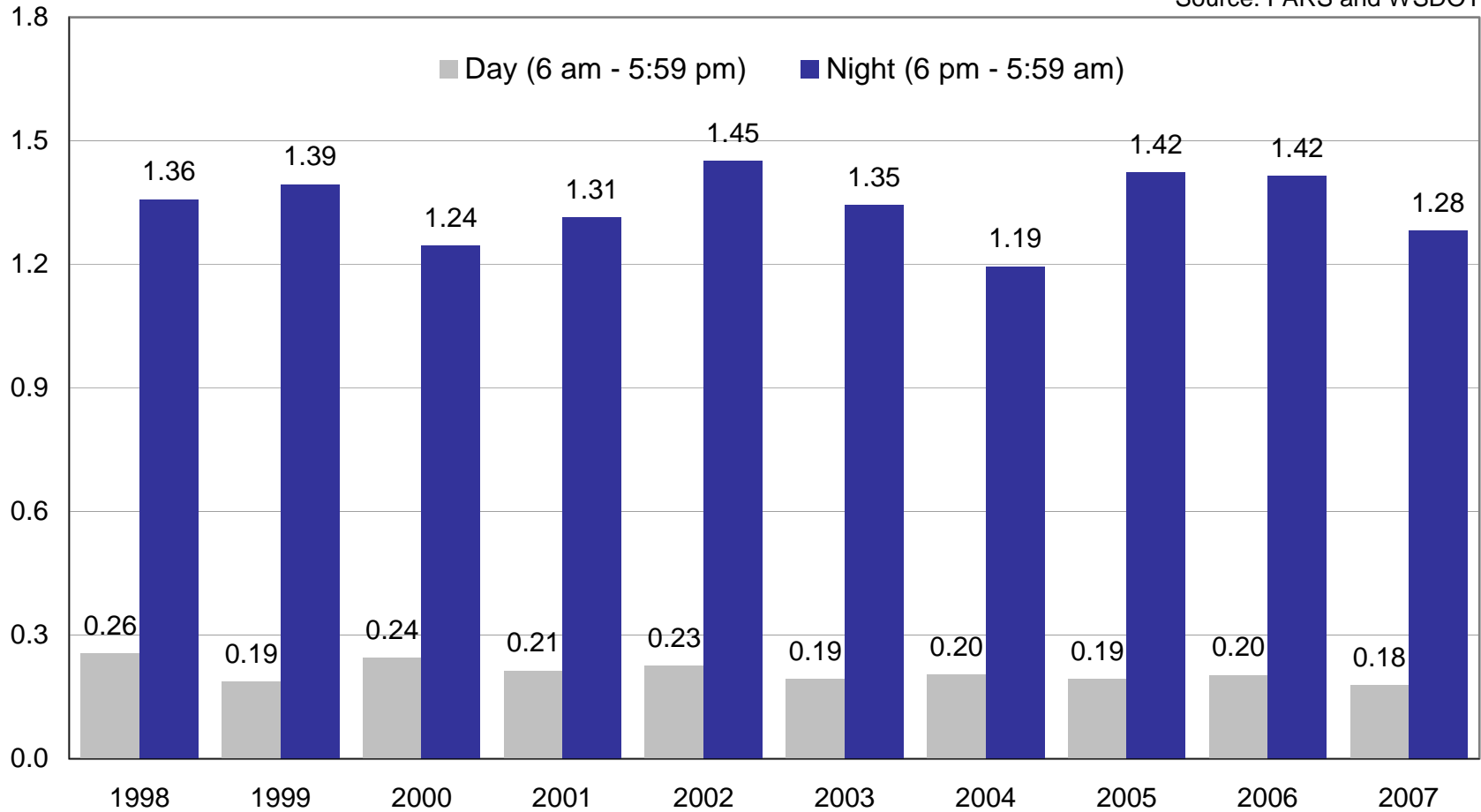


SPEEDING FATALITY RATES, WA 1998-2007

By Day v. Night

Speeding related fatalities per 100 million vehicle miles traveled

Source: FARS and WSDOT



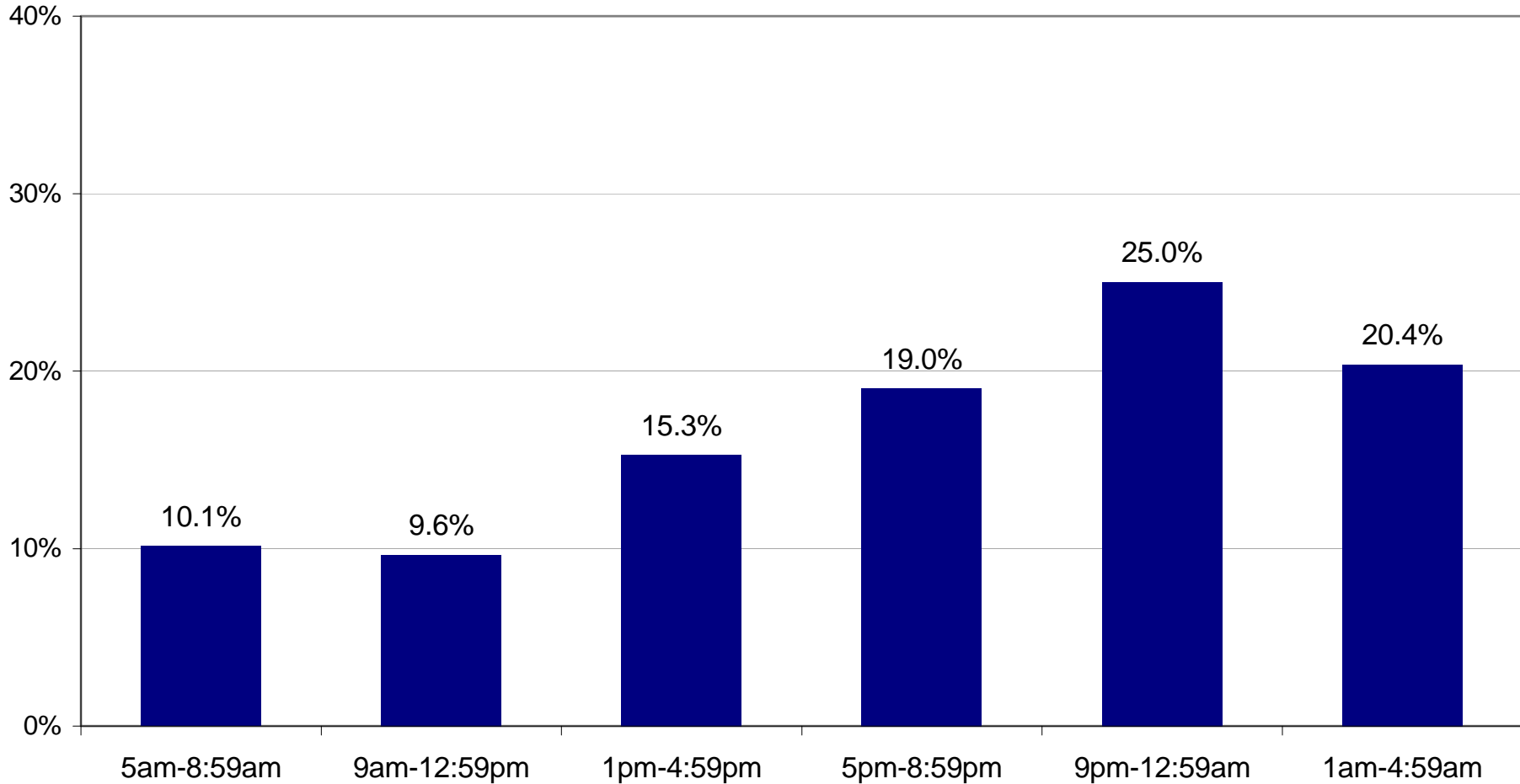
Day and night fatality rates are based on estimated 80% of vehicle miles travel occurring during the day and 20% during the night.

SPEEDING RELATED FATALITIES, WA 1998-2007

By Time of Crash

Percentage of speeding related fatalities by hour

Source: FARS

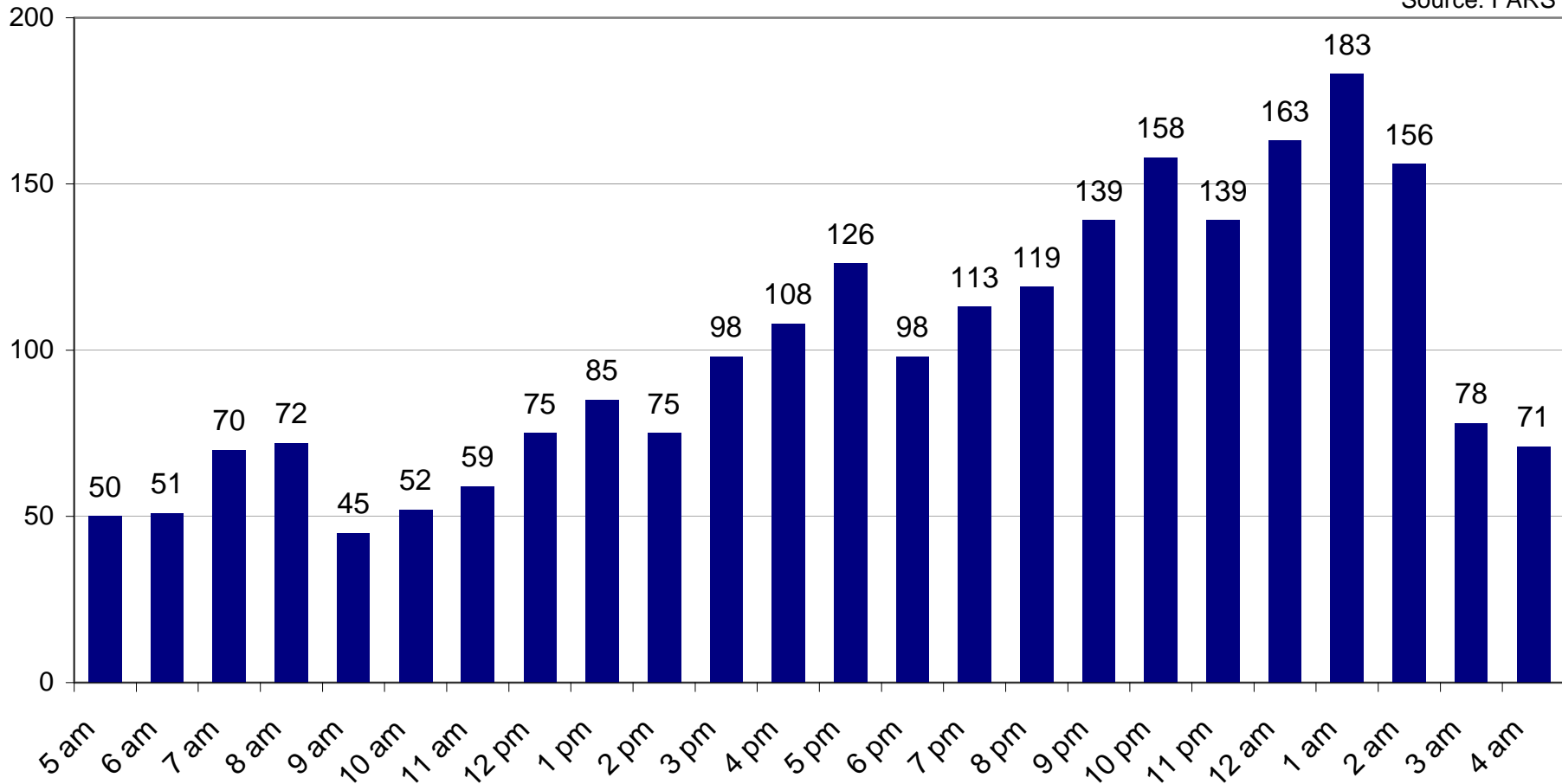


SPEEDING RELATED FATALITIES, WA 1998-2007

By Hour of Crash

Number of speeding related fatalities by Hour

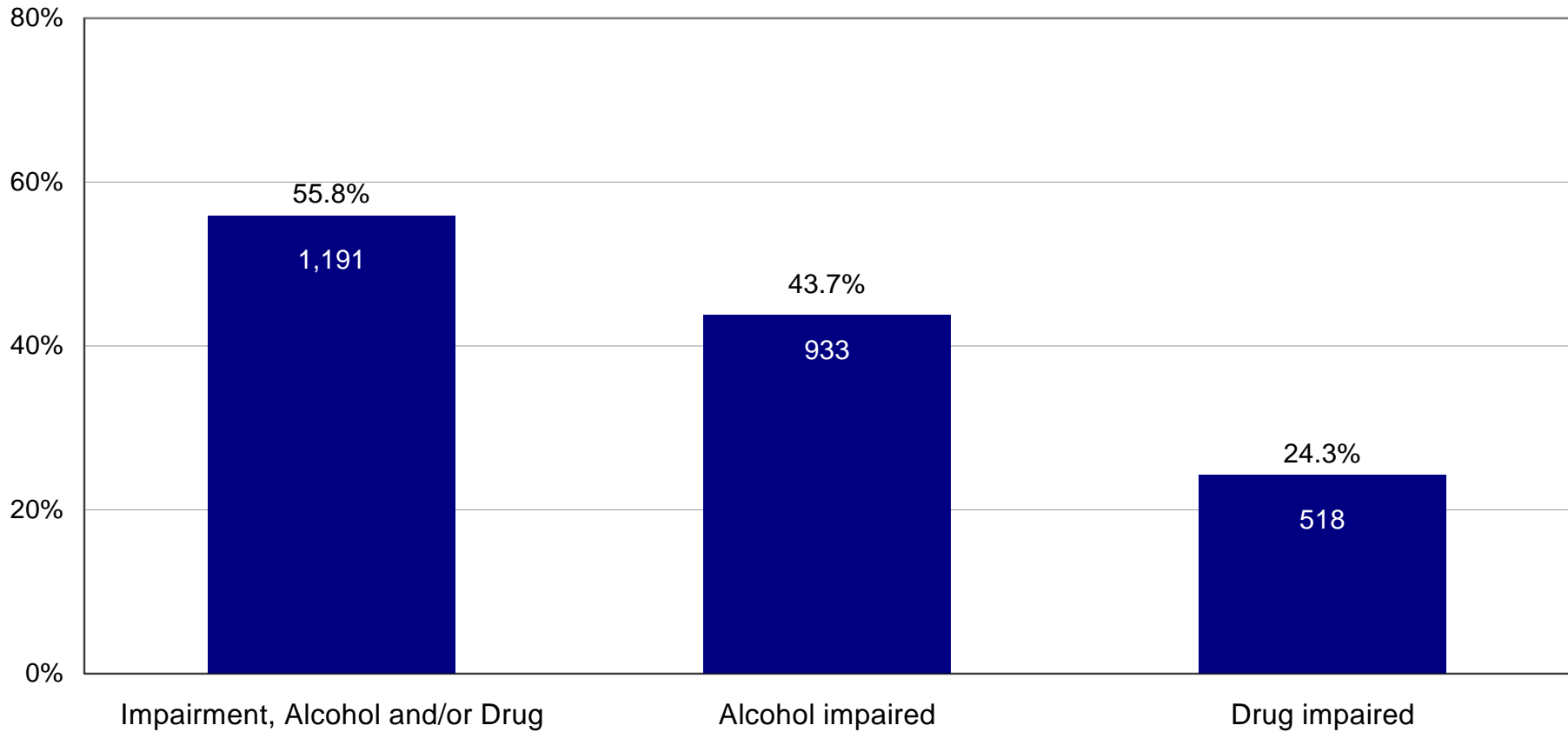
Source: FARS



IMPAIRMENT OF SPEEDING DRIVERS INVOLVED IN FATAL CRASHES, WA 1998-2007

Percentage of speeding drivers involved in fatal crashes
Number of speeding drivers in columns

Source: FARS



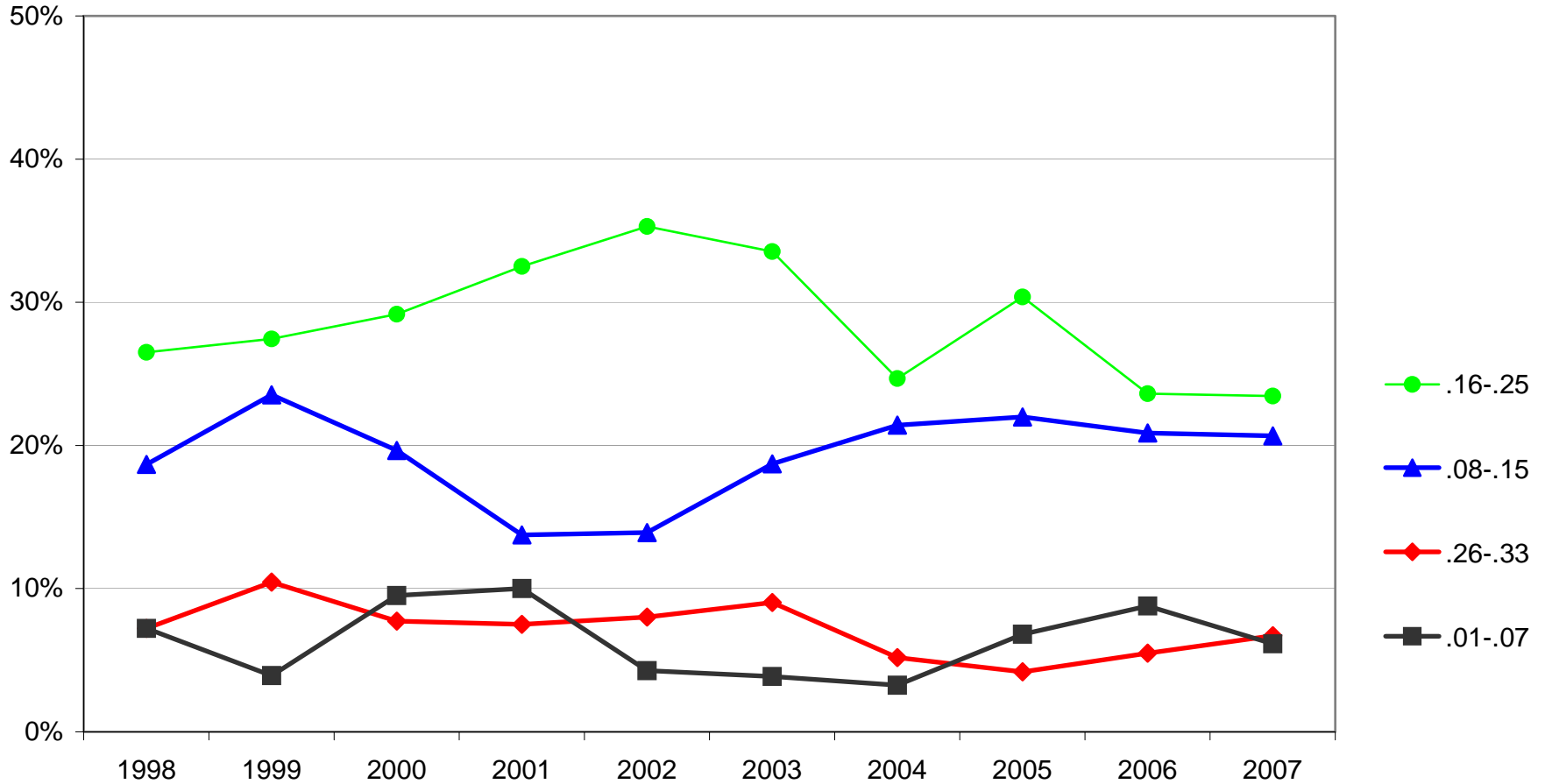
Impairment categories are not mutually exclusive.

SPEEDING DRIVERS IN FATAL CRASHES, WA 1998-2007

By BAC Level

Percentage of speeding drivers involved in fatal crashes by year

Source: FARS



Traffic Research & Data Center

Dick Doane

Research Investigator

Phone: 360-725-9894; doane@wtsc.wa.gov

Kristal Rust

Research Analyst

Phone: 360-725-9893; krust@wtsc.wa.gov

Fatality Analysis Reporting System (FARS)

Mimi Nickerson

Research Analyst

Phone: 360-725-9892; mnickerson@wtsc.wa.gov

Terry Ponton

Research Analyst

Phone: 360-725-9891; tponton@wtsc.wa.gov

Other Data Sources

FARS data query (NHTSA)

<http://www-fars.nhtsa.dot.gov/Main/index.aspx>

WSDOT Annual Collision Data Summary

<http://www.wsdot.wa.gov/mapsdata/tdo/accidentannual.htm>